



深圳市格林柏电子技术开发有限公司



# 公司产品手册

PRODUCT BROCHURE

专业板卡连接器生产厂商

# Card Edge Connectors

Pioneered Edge Connector Solutions to PCI,PCIE,DDR,M.2(NGFF),SATA,SAS for Different Transmission Standards



## Card Edge Connectors: from the beginning to the next-generation computing systems

Edge Connectors have always been the desired connector solution especially related to the development of the processors. As the chips are continuously upgraded, data processing are greatly enhanced demanding better protocols and faster response time. Correspondingly the Standards are updated to its newer versions, delivering superior signal speed transmission through implementations of the new PCIE 5.0 standard, SAS 4.0, DDR 5.0 and USB 4.0 delivering high speed signals which can reach new speed levels of up to 40Gbps.

**WingTAT is a Edge Card Connector manufacturer and supplier, providing high-quality products, and as one of competitive Edge Card Connector suppliers worldwide as well as OEM ODM precision manufacturing services.**

WingTAT has pioneered to many Connector products, and along its development, we have seen a lot of progress in the 4 decades of manufacturing that has passed by in the Connector Industry. For instance, the Card Edge Connector has been in the forefront of the CPU technology ever since the beginning of its development, considering it is a very practical approach to modular PCB interconnectivity. Thus through the years, WingTAT has continuously designed and developed edge connector solutions for its Technology Partners and Customers. This is the reason of the broad product portfolio now available and products can be easily selected from to be used to various applications of the Network, Server and Storage hardware systems.



### Meets PCIE/ SAS/ DDR Specifications

Dealing with the latest CPUs requires outstanding performance to gain the benefits of its powerful processing capabilities. That is why corresponding connectivity standards such as the PCIE 4.0 towards 5.0, SAS 3.0 to 4.0, DDR 3.0/ 4.0 towards 5.0 and even USB 3.2 towards USB 4.0 are continuously being upgraded to match its proficiency. Along with this standards are the physical interconnect solutions for its actual realization to support its applications.



### Industry Standard Edge Connectors

Card Edge connectors ranging from PCIE, MiniPCIE, M.2, SATA, SAS and DIMM are all available for any applications related to Networking, Server and Storage systems. While customized solutions are catered specific applications where standard solutions simply can not deliver high level of performance.



### Total Solution Cable Assembly

Cable assemblies are available for SATA and SAS connectors. The cables or wires are terminated with either crimp or solder type contacts for reliable connection and options for its molded versions. This completes the Total solution which can be also customized to fit your specific applications.



### The polarization key code

M.2 series connector with A/B/E/M key code, in order to reach the different field application from customer, and the coding will prevent mis-mating by operator or consumer when installed.



### Various Termination & Solutions

PCB termination such as the DIP and SMT types are guided with Posts ensuring precise mounting position and supports insertion force during mating while the Press Fit offers high retention contact force along the through hole promoting quick termination option while the Straddle type or dent type provides low-profile options for compact designs.



### High Speed Interconnect System

Faster transmission and more pin out options to cater high bandwidth and signal integrity lay out solutions. These are achieved with careful design development improving S-parameter performance, Impedance matching, and mitigating Crosstalks.

# Card Edge Connectors

Pioneered Edge Connector Solutions to PCI,PCIE,DDR,M.2(NGFF),SATA,SAS for Different Transmission Standards



**MPCIE**

0.8mm MINI PCI EXPRESS 52PIN SMT  
90°



**AGP**

1.0mm AGP SLOT



**PCIE**

1.0mm PCI EXPRESS EDGE SLOT



**HED(R)**

1.27mm EDGE SLOT



**PCI**

1.27mm PCI SLOT



**ED(R)**

2.54mm EDGE SLOT



**GED(R)**

2.54mm GAME EDGE SLOT DOUBLE  
LEAF



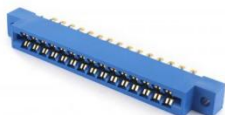
**MSL**

3.175mm EDGE SLOT WITH MIDDLE  
MOUNTING EARS



**KED/R**

3.96mm EDGE SLOT WITH LOW  
MOUNTING EARS



**KES**

3.96mm EDGE SLOT SOLDER WIRE  
WITH LOW MOUNTING EARS



**KSL**

3.96mm EDGE SLOT WITH MIDDLE  
MOUNTING EARS

# DIN 41612 Connectors

## C, R, B, Q Type 9001 Series

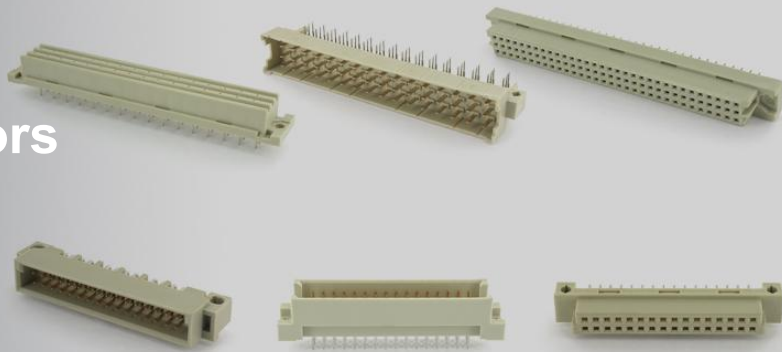
Compatible to industry standard IEC60603-2

Available in 2.54mm and 5.08mm pitch

Offers at Lever I II and III performance

Options of Pres fit and Dip termination

First Mate Last Break (FMLB) contacts available



**9001-11**

DIN 41612C TypeMale



**9001-12**

DIN 41612C TypeFemale



**9001-13**

DIN 41612R TypeMale



**9001-14**

DIN 41612R TypeFemale



**9001-31**

DIN 41612B TypeMale



**9001-32**

DIN 41612B TypeFemale



**9001-33**

DIN 41612Q TypeMale



**9001-34**

DIN 41612Q TypeFemale

# DIN 41612 Connectors

## C, R, B, Q Type 9001 Series

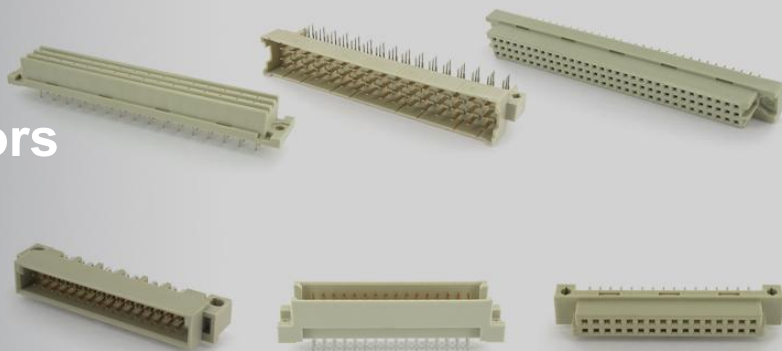
Compatible to industry standard IEC60603-2

Available in 2.54mm and 5.08mm pitch

Offers at Lever I II and III performance

Options of Pres fit and Dip termination

First Mate Last Break (FMLB) contacts available



**9001-21**

DIN 41612C Type Male 5.08mm



**9001-22**

DIN 41612C Type Female 5.08mm



**9001-23**

DIN 41612R Type Male 5.08mm



**9001-24**

DIN 41612R Type Female 5.08mm



**9001-41**

DIN 41612B Type Male 5.08mm



**9001-42**

DIN 41612B Type Female 5.08mm



**9001-43**

DIN 41612Q Type Male 5.08mm



**9001-44**

DIN 41612Q Type Female 5.08mm



# DIN 41612 Connectors

## Half C, R, B & Q Type 9001 Series

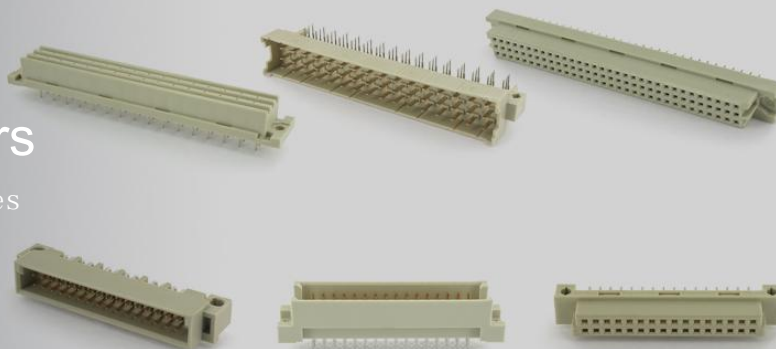
Compatible to industry standard IEC60603-2

Available in 2.54mm and 5.08mm pitch

Offers at Lever II and III performance

Options of Pres fit and Dip termination

First Mate Last Break (FMLB) contacts available



**9001-15**

DIN 41612 Half C Type Male



**9001-16**

DIN 41612 Half C Type Female



**9001-17**

DIN 41612 Half R Type Male



**9001-18**

DIN 41612 Half R Type Female



**9001-35**

DIN 41612 Half B Type Male



**9001-36**

DIN 41612 Half B Type Female



**9001-37**

DIN 41612 Half Q Type Male



**9001-38**

DIN 41612 Half Q Type Female

# DIN 41612 Connectors

## Half C, R, B & Q Type 9001 Series

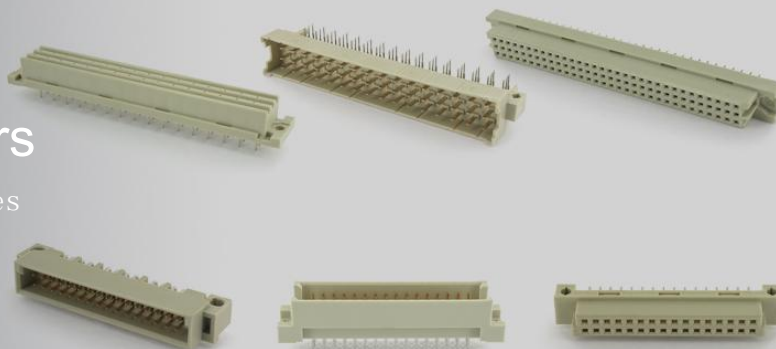
Compatible to industry standard IEC60603-2

Available in 2.54mm and 5.08mm pitch

Offers at Lever II and III performance

Options of Pres fit and Dip termination

First Mate Last Break (FMLB) contacts available



**9001-25**

DIN 41612 Half C Type Male 5.08mm



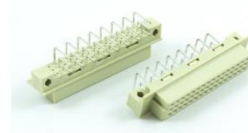
**9001-26**

DIN 41612 Half C Type Female 5.08mm



**9001-27**

DIN 41612 Half R Type Male 5.08mm



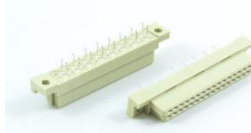
**9001-28**

DIN 41612 Half R Type Female 5.08mm



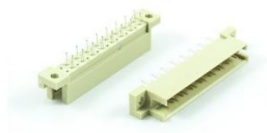
**9001-45**

DIN 41612 Half B Type Male 5.08mm



**9001-46**

DIN 41612 Half B Type Female 5.08mm



**9001-47**

DIN 41612 Half Q Type Male 5.08mm



**9001-48**

DIN 41612 Half Q Type Female 5.08mm

# DIN 41612 Connectors

## 1/3 C, R, B & Q Type 9001 Series

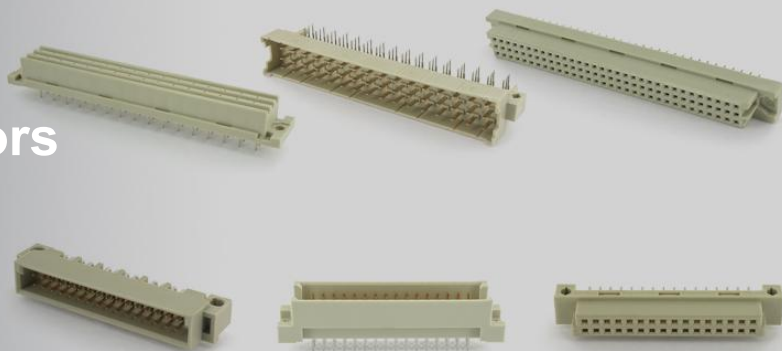
Compatible to industry standard IEC60603-2

Available in 2.54mm and 5.08mm pitch

Offers at Lever I II and III performance

Options of Pres fit and Dip termination

First Mate Last Break (FMLB) contacts available



9001-15

DIN 41612/3C Type Male



9001-16

DIN 41612/3C Type Female



9001-17

DIN 41612/3R Type Male



9001-18

DIN 41612/3R Type Female



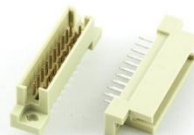
9001-35

DIN 41612/3B Type Male



9001-36

DIN 41612/3B Type Female



9001-37

DIN 41612/3Q Type Male



9001-38

DIN 41612/3Q Type Female



# DIN 41612 Connectors

## 1/3 C, R, B & Q Type 9001 Series

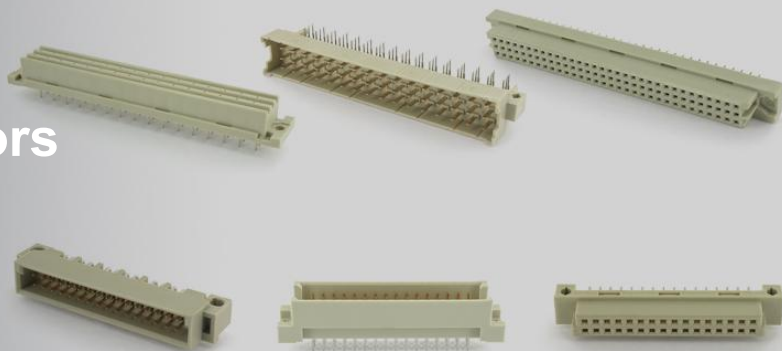
Compatible to industry standard IEC60603-2

Available in 2.54mm and 5.08mm pitch

Offers at Lever I II and III performance

Options of Pres fit and Dip termination

First Mate Last Break (FMLB) contacts available



**9001-25**

DIN 41612/3C Type Male 5.08mm



**9001-26**

DIN 41612/3C Type Female 5.08mm



**9001-27**

DIN 41612/3R Type Male 5.08mm



**9001-28**

DIN 41612/3R Type Female 5.08mm



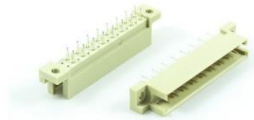
**9001-45**

DIN 41612/3B Type Male 5.08mm



**9001-46**

DIN 41612/3B Type Female 5.08mm



**9001-47**

DIN 41612/3Q Type Male 5.08mm



**9001-48**

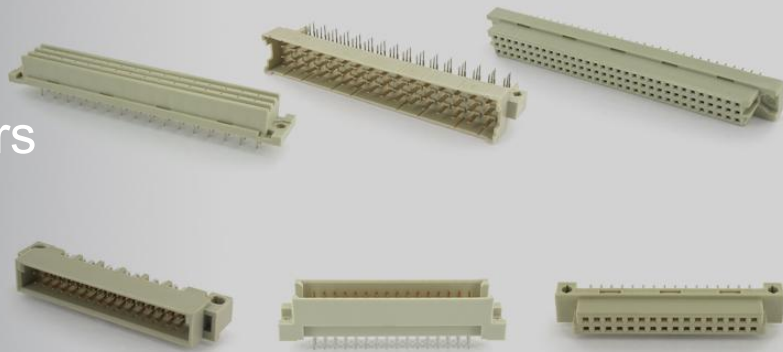
DIN 41612/3Q Type Female 5.08mm

# DIN 41612 Connectors

## IDC Type 9001 Series

Compatible to industry standard IEC60603-2

Offers at Lever II and III performance



**9001-1296IDC**

DIN 41612 IDC Type 3 Row 96P Female



**9001-1648IDC**

DIN 41612 IDC Type 3 Row 48P Female



**9001-1264IDC**

DIN 41612 IDC Type 3 Row 64P Female



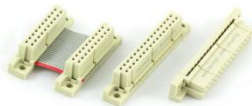
**9001-1632IDC**

DIN 41612 IDC Type 3 Row 32P Female



**9001-3264IDC**

DIN 41612 IDC Type 2 Row 64P Female



**9001-3632IDC**

DIN 41612 IDC Type 2 Row 32P Female



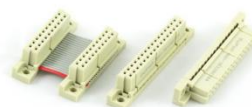
**9001-16xxDC**

DIN 41612 IDC Type 3 Row xxP Female



**9001-16xxDC**

DIN 41612 IDC Type 3 Row xxP Female



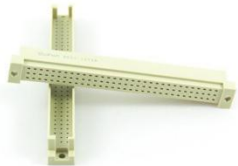
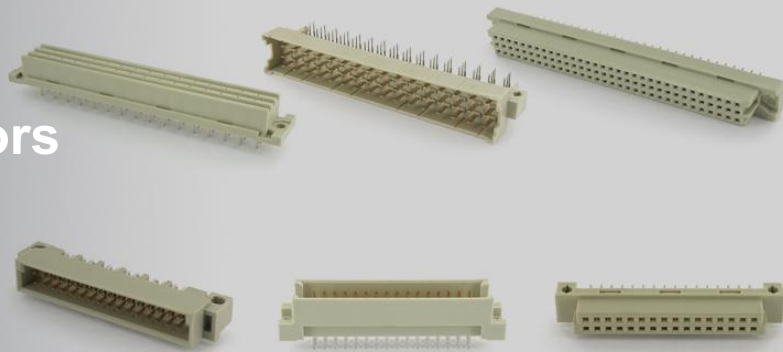
**9001-36xxDC**

DIN 41612 IDC Type 2 Row xxP Female

# DIN 41612 Connectors

## Shroud 9001 Series

DIN 41612 Shroud



**9001-13Y2B**

DIN 416123 Rows96PShroud



**9001-33Y2B**

DIN 416122 Rows64PShroud

# Flat Cable Assembly(IDC)

IDC Connector Solution to Flat Calbes for Fast and Reliable Cable Assemblies



## Flat Cable Assembly with IDC Solutions: time tested reliability and convenience

### in various use cases

Various IDC connectors available for fast and reliable assembly of Flat cables. Different interfaces and pin counts to serve specific applications while devices and many equipment used various protocols which involves high density connections requiring fast and reliable terminations.

WingTAT is a Flat Cable Assembly manufacturer and supplier, providing high-quality products, and as one of competitive Flat Cable Assembly suppliers worldwide as well as OEM ODM precision manufacturing services.

WingTAT delivers off-the-shelf and Customized Flat cable solutions, various connectors available accommodating Flat cable using IDC terminations. Pin-out available in 4 to 64 pins, as a socket or plug while also available in connectors like D-sub, DIN 41612 and MIM series. It delivers fast assembly process and reliability especially in demanding applications such as high bending conditions, low profile and harsh environment.



#### Various Connectors with IDC

IDC is a style of terminating cables to connectors by inserting the wires into the contact blades and pressing it to cut through the insulation and make contact to the conductor. From D-sub, DIN 41612, MIM series or Socket, Plug, as Headers and with Ejector, these are all available to choose from.



#### Fast and Quick Assembly

By pressing on an IDC connector, the inserted Flat cable can be easily connected. This is applicable for connectors with numerous wire connections such as up to 64 Pins. The IDC connector must match corresponding flat cables to effectively establish connection.



#### Customized Strain & Relief

SR or strain & relief solutions are available to add support to the flat cable to make sure it will be robust enough for multiple bending and other external pulling force that can be present during actual applications.



#### Numerous Circuit options

Various Pin-out and contacts arrangement are available, ranging from 4Pins up to 64Pins depending on the Connector series. For example D-sub are available with 9, 15, 25 and 37 pins, while DIN41612 are with 32 and 64 pin counts, MIM series have 4 to 20 pins and the rest are available with 6 to 64 pins.



#### Hybrid Customized Solutions

Cable assemblies are configured end to end, prepared with both ends having the same connector or with combination to other connector types or wire harness. These depends on the type of modules or systems that are being integrated to perform specific functions in a system.



#### Broad Applications and Services

The continuous development of communication technology from Automotive, Industrial Automation and Network communications, provide uses for the Flat Cable assembly and is implemented by Connectors with IDC termination.

# Flat Cable Assembly(IDC)

IDC Connector Solution to Flat Calbes for Fast and Reliable Cable Assemblies



**II CABLE**

0.635mm FLAT CABLE



**II-1 CABLE**

1.27mm FLAT CABLE



**II-2 CABLE**

FLAT CABLE ASSEMBLY





---

## Wing Tat Technology Co., Limited

Web: [www.wingtat-hk.com](http://www.wingtat-hk.com)

E-mail: [sales@wingtat-hk.com](mailto:sales@wingtat-hk.com)

## 深圳市格林柏电子技术开发有限公司

地址：广东省深圳市光明区玉塘街道田寮社区第二工业区 65 栋

电话：+86 755 23956092

邮箱： [sales@wingtat-hk.com](mailto:sales@wingtat-hk.com)

## 分销商

地址：深圳市福田区华强电子世界 3 号楼 E3-07

电话：18028784766，张先生